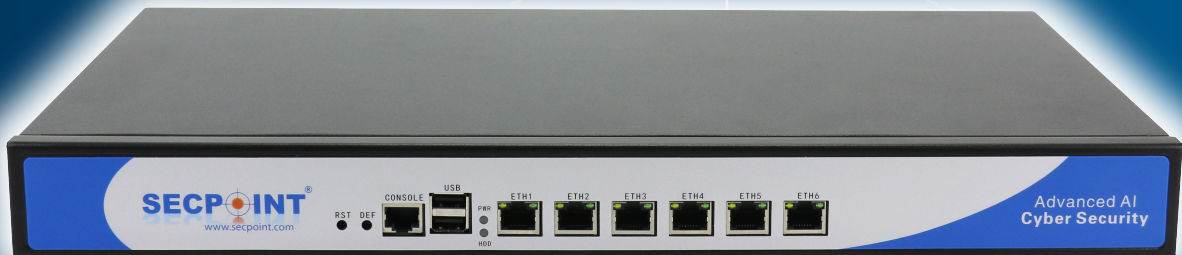


SecPoint® Penetrator™

- 64 Bit High Performance
- Scans Local & Public IPs
- Best Vulnerability & Assessment Scanning
- Easy Solutions to found vulnerabilities
- Virtual VMware & Hyper-V Support



**Prevent Hackers from entering your server and network!
Vulnerability management is key to any security strategy**

The latest automated hacking tools can inflict damage across a network and across the world in a matter of minutes. Understanding the potential vulnerabilities within your system is vital to any security strategy.

The screenshot displays the SecPoint Penetrator web interface. The top navigation bar includes the SecPoint logo, the product name 'PENETRATOR™', and the tagline 'VULNERABILITY ASSESSMENT & WiFi PEN TESTING'. A sidebar on the left contains various menu items such as 'Home', 'Vulnerability Scanner', 'Schedule', 'AI Processing', 'Statistics', 'Tickets', 'WiFi Pen Test', 'Cloud Users', 'Scan Distribution', 'System', 'Network Setup', 'Update', and 'Support'. The main content area is titled 'List of Vulnerability Scans' and features a table with columns for Date, Scan Name, Profile, Progress, Risk, and Options. The table lists several scans with their respective dates, profiles (Quick Scan or Best Scan), progress status (Processing, Complete, or Cancelled), and risk levels (Low or High). The risk level is further detailed with counts for different severity levels (e.g., High, Medium, Low, Info). A search bar is located at the top right of the table area.

Date	Scan Name	Profile	Progress	Risk	High	Medium	Low	Info	Options
17-06-2020	LAN5	Quick Scan	Processing... 6%	Low	0	0	0	0	[Icons]
16-06-2020	LAN4	Quick Scan	Complete	High	1	7	1	8	[Icons]
16-06-2020	LAN3	Quick Scan	Cancelled	Low	0	0	0	0	[Icons]
11-06-2020	LAN	Best Scan	Complete	High	2	14	9	21	[Icons]
06-11-2019	Ctm02	Best Scan	Complete	High	1390	1782	483	4106	[Icons]
28-10-2019	Ctm_26-09-2019_2	Best Scan	Complete	High	389	1322	352	673	[Icons]
21-08-2019	MCS_21-08-2019	Best Scan	Complete	High	42	2138	292	958	[Icons]
21-08-2019	MServers_21-04-2020	Best Scan	Complete	High	1084	243	31	484	[Icons]
21-08-2019	Fun 21-08-2019	Best Scan	Cancelled	High	1	4	12	12	[Icons]
19-08-2019	Fun 19-08-2019	Best Scan	Complete	High	1	7	1	7	[Icons]

Vulnerability management is key to any security strategy

Vulnerability Management

The Penetrator™ is a vulnerability management and penetration testing appliance for your network, which comes pre-loaded and ready to go.

It is a powerful and intelligent security assessment solution.

Comprehensive Vulnerability Scanning

With its comprehensive vulnerability database and the application of sophisticated auditing techniques, the SecPoint® Penetrator™ enables you to always be one step ahead of even the most skilled and advanced attackers. It has no limit on the amount of auditing nor limit on the number of IP addresses and is most certainly one of the strongest and most comprehensive vulnerability assessment solutions on the market.

Professional Skilled Support

Second to none with the fastest reply and response rate to support queries in the industry. The best 24 Hour skilled support team operation.

Fast remote login with problem solving via TeamViewer.

Follow Support Ticket Status via the Support Center.

SecPoint® Penetrator™

Penetration Testing Appliance

Easy-to-understand Reporting

Reports can be customised and are available as XML, PDF or HTML files.

System vulnerabilities are categorised as either high risk, medium risk or low risk, together with name and details of each vulnerability and its solution. The report also gives a conclusion as to the overall security level of the audited system.

An executive summary is compiled specifically for management level review with both text and graphical details from the audit results.

Easy to install

The Penetrator is compatible with any operating system. It is easy to install, with minimal configuration. Installation wizards provide for fast setup.

Scalable and Upgradeable

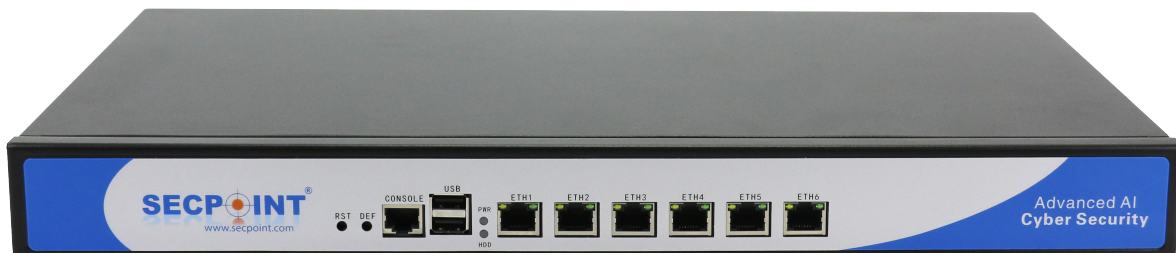
The SecPoint® Penetrator™ is scalable for network growth and IP addresses.

Distributed Audit Capability

You can setup multiple SecPoint® Penetrator™ at different locations on the internal network and remotely via an encrypted secure connection connect them together. This allows distributed auditing, configuration and reporting from a centralized point.

Launch Real Exploits and Denial of Service Attacks

You can launch real exploits to verify that an identified vulnerability is exploitable. It is also possible to launch real Denial of Service attacks to test preproduction systems for stability.



Features and Benefits

- No Data Collection, Backdoor Free
- 11 Scan Profiles, HIPAA, OWASP top 10, Prepare for PCI, Firewall Scan, SCADA and more
- Advanced Web Crawler - SQL Injection - XSS - SSL
- Bugtraq ID / Mitre CVE / Ubuntu USN / Microsoft / OSBDB
- Schedule scans daily, weekly, monthly
- Prevent Hackers To Access Your Server
- Vulnerability Scanning
- Vulnerability Assessment
- 60,000 + Vulnerabilities
- Launch Real Exploits
- Distributed Scanning Capability
- Report languages: English, Spanish, Danish, Italian, Korean, Dutch, Norwegian, Thai, Portuguese, Turkish & Croatian
- Scan any OS and Network devices
- Reports Branding
- Detailed Remedies for Identified Vulnerabilities
- Secure Design All Data Stored on Unit
- Ticket System for full Vulnerability Management
- Vulnerability Audit
- Launch DoS & DDoS attacks
- Advanced Audit Options
- Option for centralized update point
- Audits any OS
- Automatic Web Crawl Script Engine
- Stand-Alone SFF or 1U Appliance
- Multi User Support
- Launch Real Exploits
- Option for syslog remote logging
- OS Independent Interface
- Distributed Auditing
- XML, PDF and HTML Reports
- Finds SQL Injection

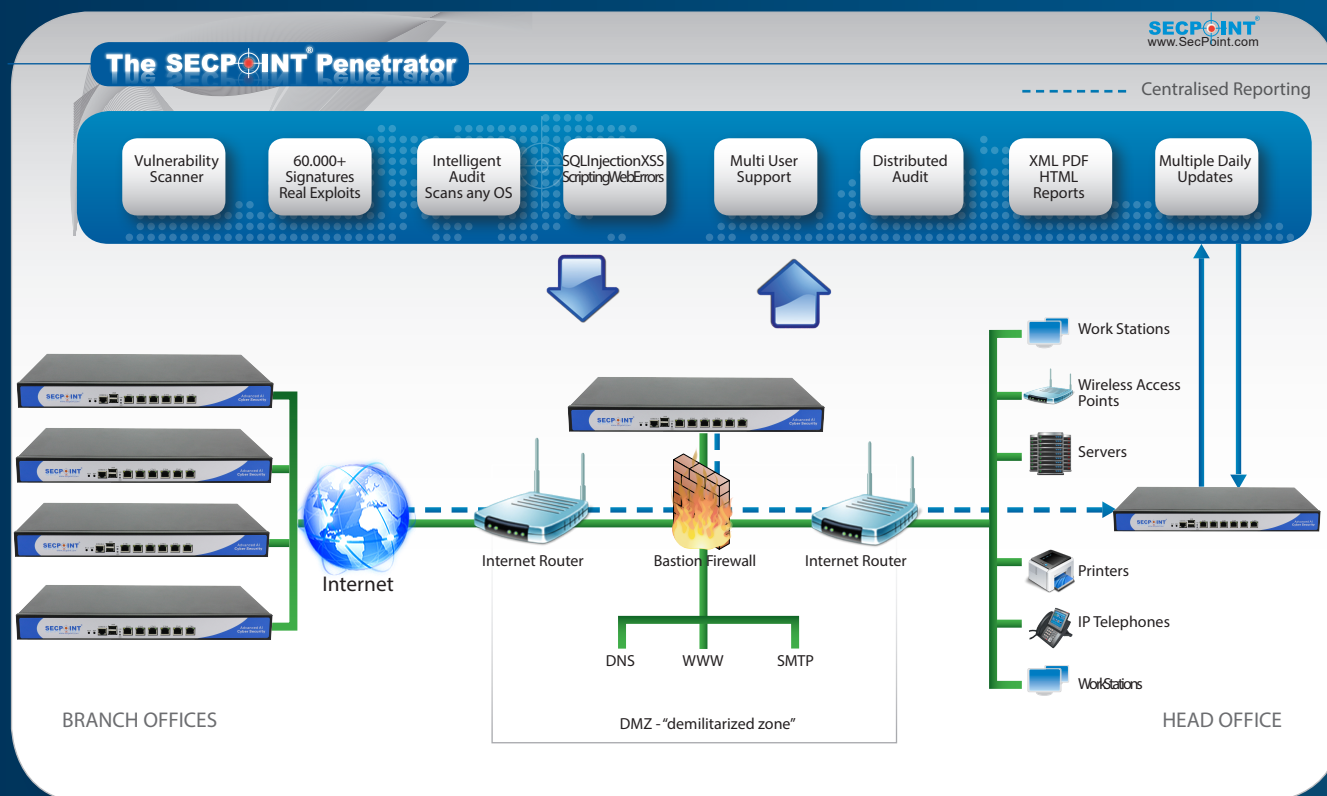
SecPoint® Penetrator™

Penetration Testing Appliance

SecPoint® Penetrator™ Models >>

	S9 - 4-32 IPs	S9 - 8-64 IPs	S9 - 128-256 IPs	S9-512-2048IPs
Height	1 U Rackmount Small Form Factor SFF	1U Rack mount	1U Rack mount	1U Rack mount
Power Supply	60W power supply AC/DC 90-264V Full Range	200W Power supply AC/ DC90-264 V Full range	200W Power supply AC/ DC90-264 V Full range	200W Power supply AC/ DC90-264 V Full range
Environment Temperatures	Operating : 0°C to 40°C Storage: -25°C to 75°C	Operating : 0°C to 40°C Storage: -40°C to 85°C	Operating : 0°C to 40°C Storage: -40°C to 85°C	Operating : 0°C to 40°C Storage: -40°C to 85°C
Network Mbps	10/100/1000 Ethernet interfaces	10/100/1000 Ethernet interfaces	10/100/1000 Ethernet interfaces	10/100/1000 Ethernet interfaces
Automatic database and software updates	Yes	Yes	Yes	Yes

Are you ready
for the next step?



E-mail: info@secpoint.com

SECPOINT
www.secpoint.com

For more information on Penetrator, please visit
<https://www.SecPoint.com/penetrator.html>
<https://support.SecPoint.com>

VAR/VAD Contact